

# CMS Web Client

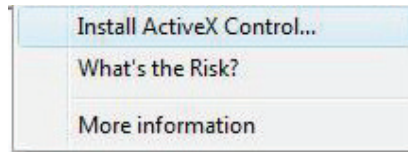
## User`s Manual



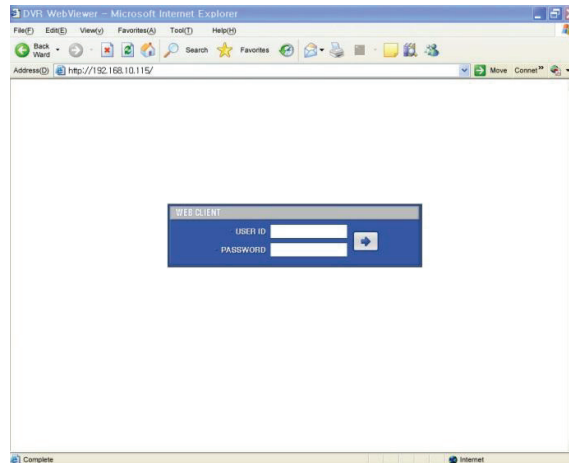
# 10. CMS WEB CLIENT

## 10.1 Setup and Login

- MS Explorer web browser is required for installation and using this program.
- Open a browser and type the IP address of DVR.
- It is required to install ActiveX in the first connection.
- Basically, Explorer limits automatic ActiveX installation.
- Click the message above in the screen, then following menu box will appear.



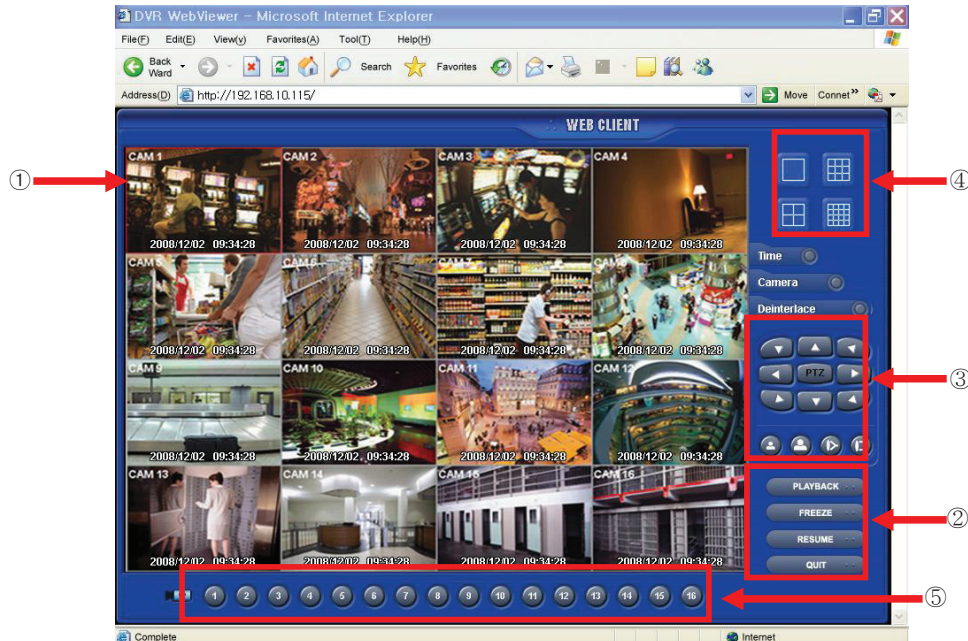
- Click "Install ActiveX Control..." and start installation.
- Installation box will appear and click "Install" for next step.
- After complete installation, Login panel will appear.
- Enter User ID and password of registered DVR then click

**NOTE**

Before network connection, be sure that HDD is installed. Otherwise, the DVR will not be connected over network.

## 10.2 Live Display

- After Login, the following screen will appear.



- The screen contains following features:

- ① Display current live video
- ② Setting display mode
  - Playback : Transferring search mode.
  - Freeze : Pause current display.
  - Resume : Resume paused display.
  - Quit : Finish program and close browser.
- ③ PTZ controller – Must complete the control setting on its DVR and Cameras first.



- Pan/Tilt direction button.



- Zoom In / Zoom Out control button.

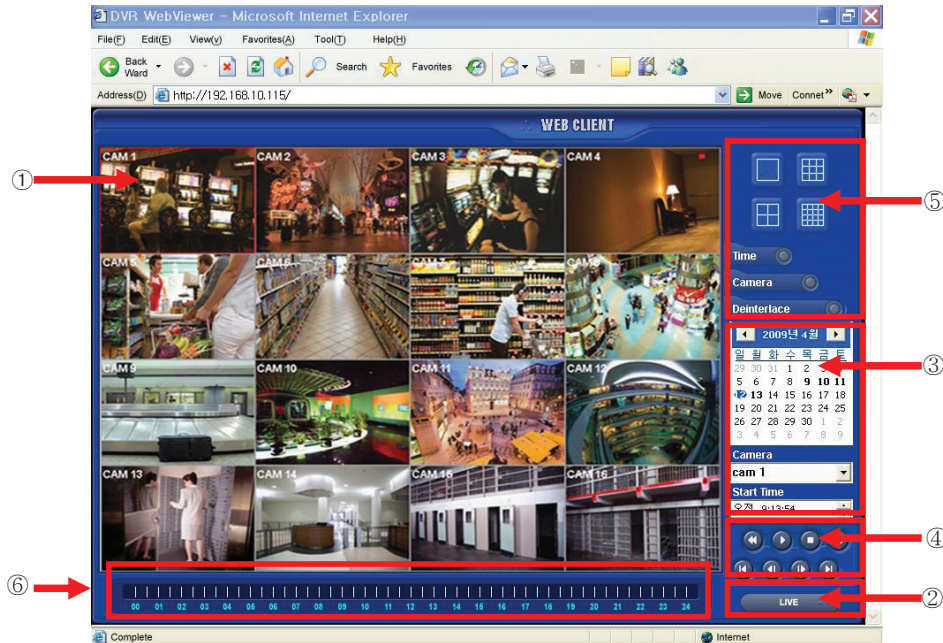


- Focus Near / Focus Far control button.

- ④ Select display split mode. User can choose 1, 4, 9, 16 split display consequently.
  - Check boxes for hiding/showing text from OSD.
- ⑤ Channel selection button - available to check the channel (camera) number of current display.

## 10.3 Playback Screen

- Click [Playback] then following screen will appear.



- The screen contains following features:

- ① Searched playback video displays.
- ② Transferring Live mode.
- ③ Setting Date/Time to search.
  - Click a date in calendar, then recorded data will be showed up in Time bar.
  - Start Time : Setting start time.
  - Camera : Choosing camera number from 1~16 individually or all channels.
- ④ Play functions for playback.

	Fast Backward Play
	Fast Forward Play
	Play
	Stop
	Go to the First Image
	Go to the Last Image
	Go to the Previous Image
	Go to the Next Image

- ⑤ Select display split mode. User can choose 1, 4, 9, 16 split display consequently.
  - Check boxes for hiding/showing text on OSD.
- ⑥ Indicate the recorded data in Time bar figure.