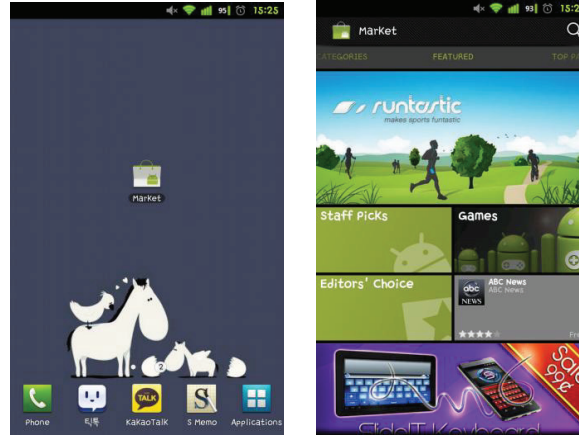


11.2 Android Phone

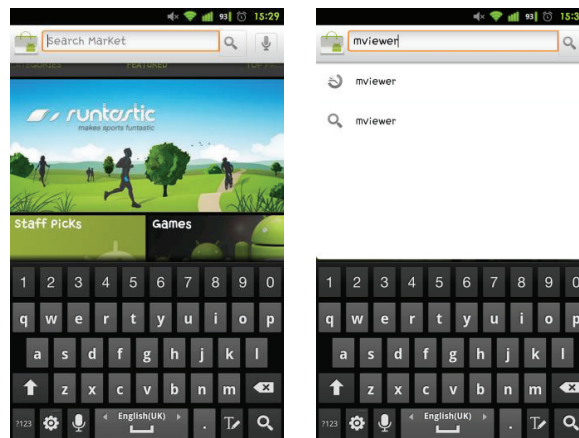
11.2.1 System Requirements

- This program is designed and applied only for Android OS(version 1.6 or higher) based Smart phones.

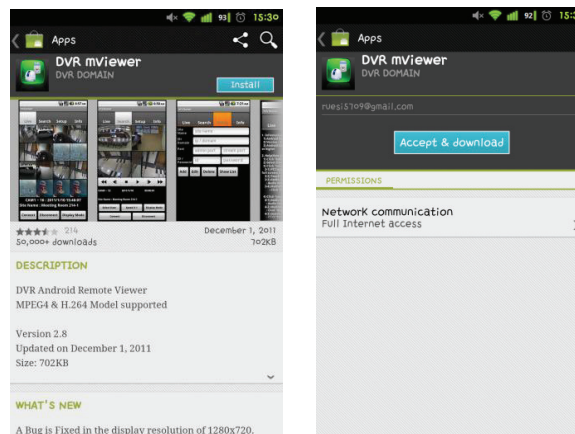
11.2.2 Installation



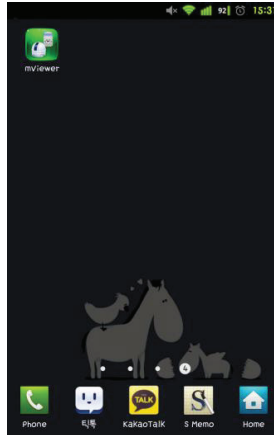
- Turn on the phone then connect to Android Market.



- Move to search menu and type “mviewer” then select “” program which is offered from dvrdomain by free.



- Click “ **Install** ” then “ **Accept & download** ” to start installation.



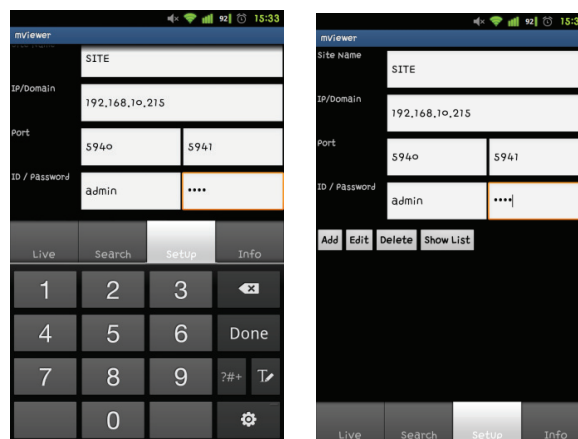
- The program will be automatically installed in user’s application menu.

11.2.3 Site Registration

- Click “  ” icon on application menu then below will show.

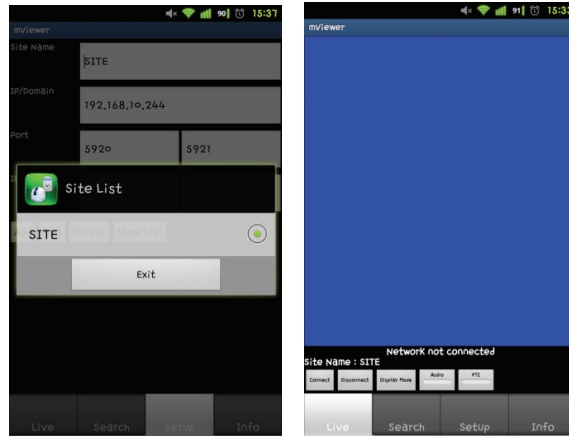


- Move to “ **Setup** ” tab and enter site information which are same as CMS site registration.

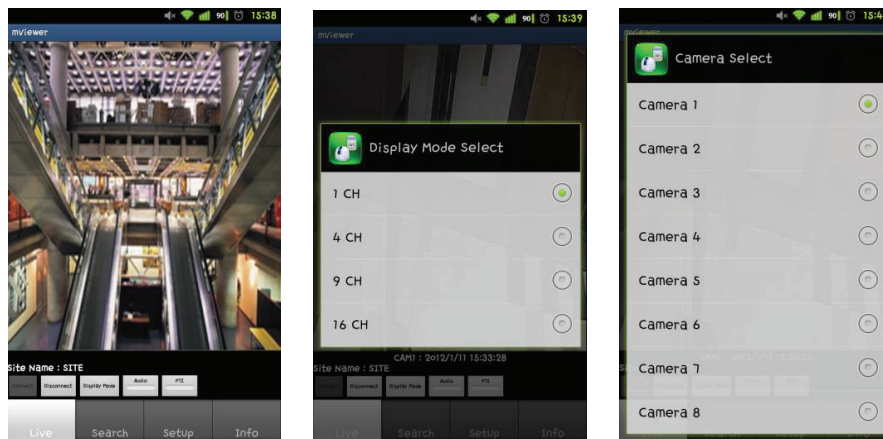


- Enter Site Name, IP or DDNS address.
- Enter Admin/Stream port value.
- Enter ID/Password.
- Click “ **Add** ” to save the setting.

11.2.4 Connection

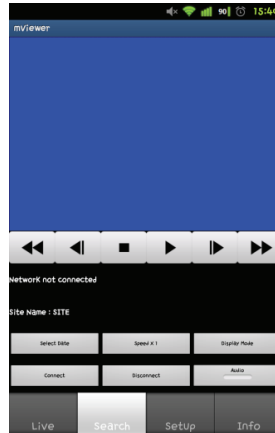


- Click “**Show SiteList**” icon and select one of the registered site and click “**Exit**”.
- Move to “**Live**” tab and click “**Connect**” icon.

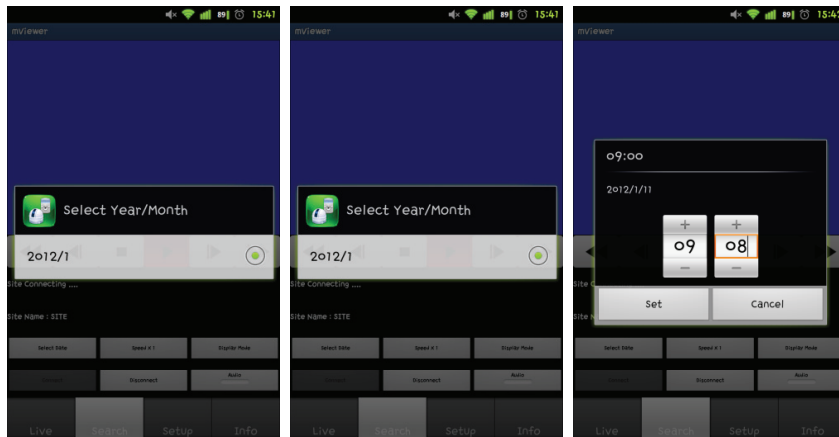


- To change the display mode, click the “**Display Mode**” and select among 1ch (full screen), 4ch, 9ch and 16ch multi view.
- To select other channels, click the “**Camera Select**” icon below the Site Name.
- 16 channel multi view is available for CIF resolution.
- 4 channel multi view is available for H.D1 and D1 resolution.
- Only 1 channel view(full screen) is available for 720p and 1080p.

11.2.5 Search



- Users are able to search the recorded data in the mobile CMS program.
- Click “**Connect**” to use search function of the application.
- click “**Select Date**” to select the month, the date and the time in order.



- Click “**Select Date**” to select the month, the date and the time in order.
- Users can adjust the speed of playback from x1 to x 64 or extreme.
- Please note that this function is same as the one of “Playback Control Button” in 9.5.1.
- Click “**Display Mode**” to select the display mode among 1ch, 2ch and 9ch.
(The number of display channel varies according to the recording resolution of the model.)
- Click “**Disconnect**” to quit the search function of the application.

11.2.6 Audio

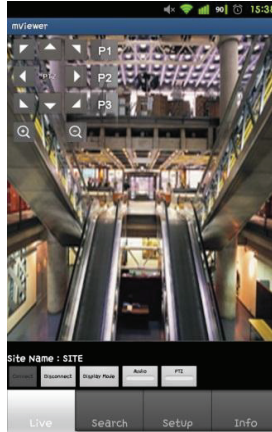
- Users can hear the audio of 1channel in live and playback mode.

NOTE

Audio out is available only in full screen mode.(1channel only)

11.2.7 PTZ control

- Users are able to control PTZ with Android Phone.
- Press volume up button on the right side of the phone to zoom in.
- Press volume down button on the right side of the phone to zoom out.



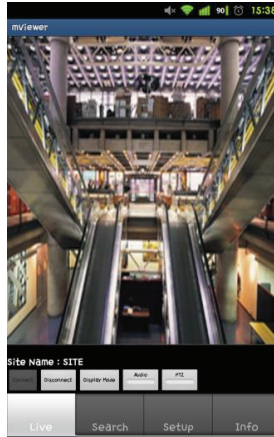
- Touch sides and corners of the screen to change the direction as user want.
- Touch right side of the screen to move right and left side to move left.
- Touch up side of the screen to move up and down side to move down.
- In the same way, touch any corners to change the directions.

11.2.8 Information

- Click “ **Info** ” to get more information, containing how to setup and use the application.




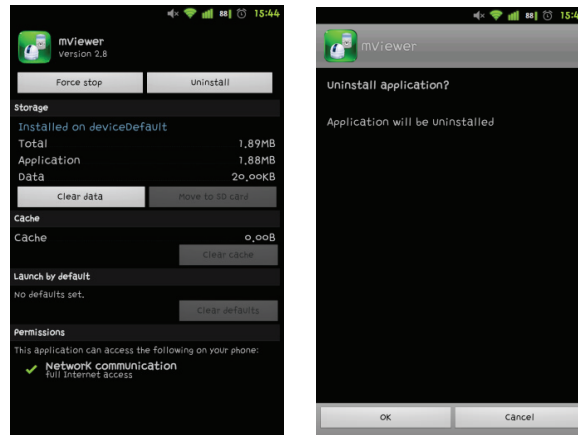
11.2.9 Disconnection




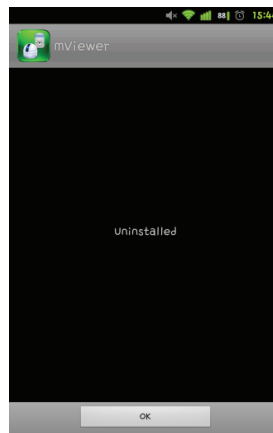
- When disconnecting, please click  and exit the mobile viewer program.


11.2.10 Uninstallation

- Move to Setup > Application > Manage Applications then select .



- Click  icon then it will ask to delete the program.



- Click  button to successfully uninstall the program.